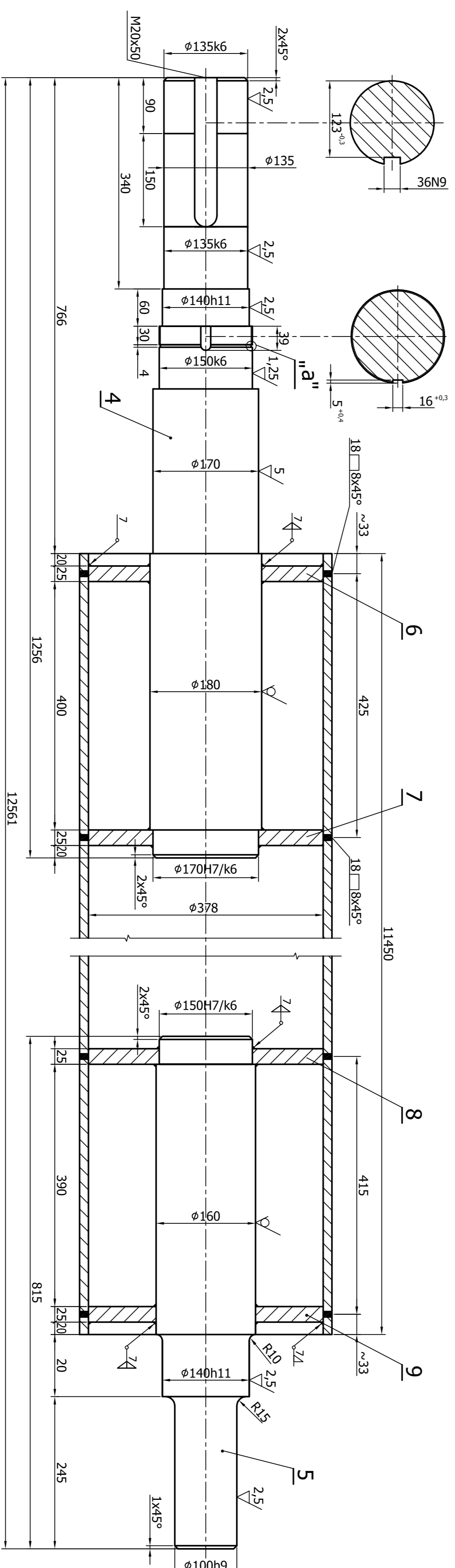
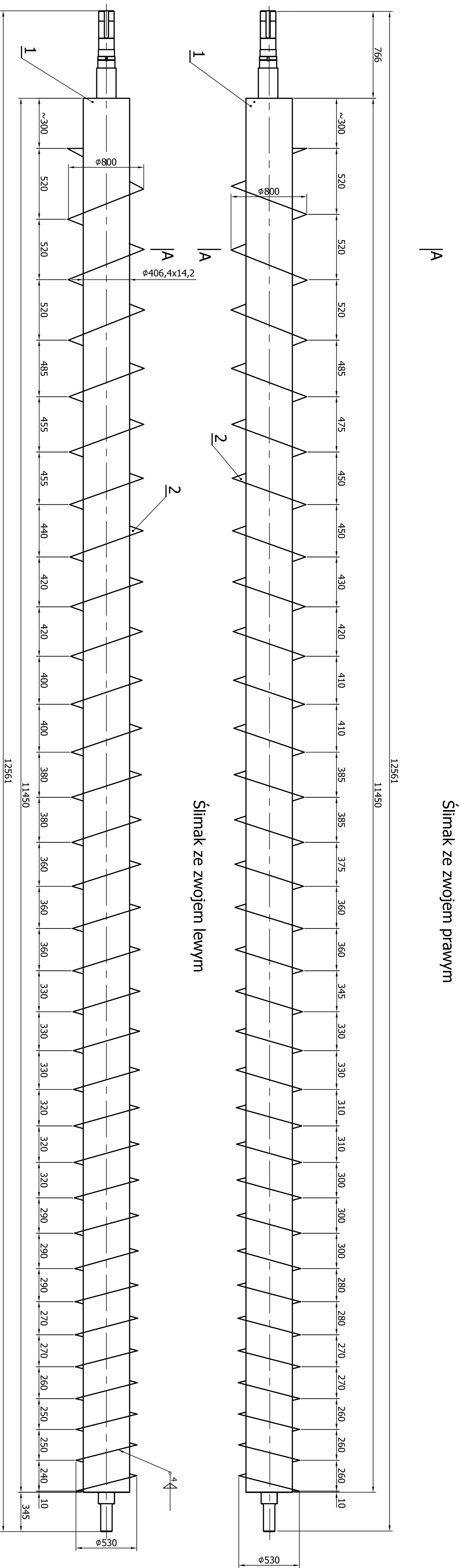
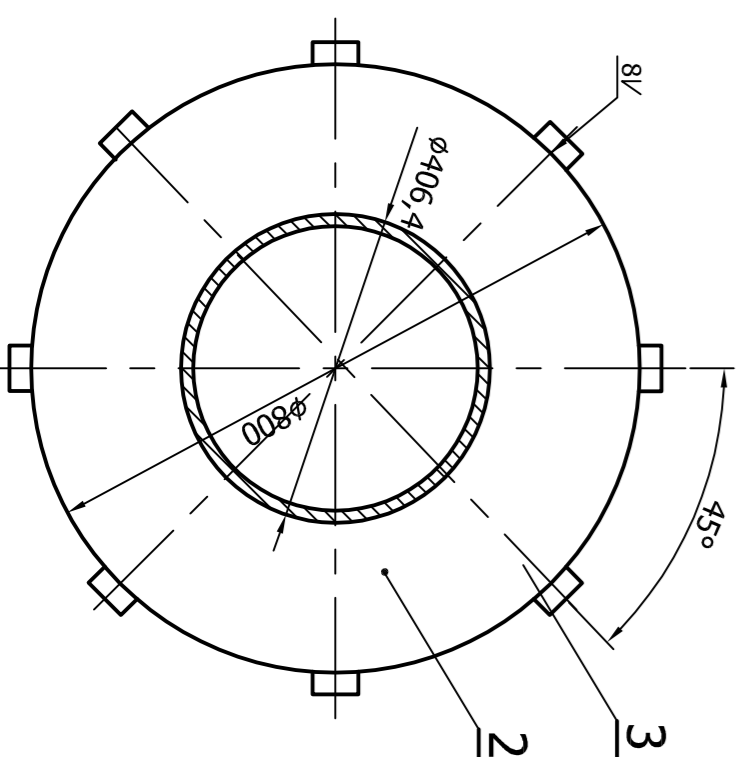
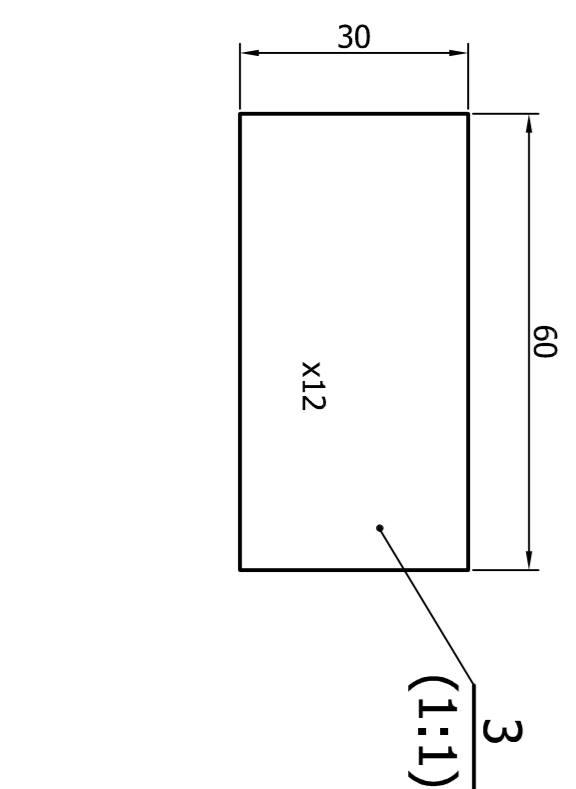
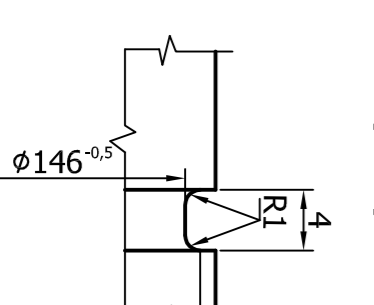


| WYMIAR | ODCHYLENIE |
|---------|------------|
| 36N9 | 0,06±2 |
| Ø100h9 | 0,08±7 |
| Ø135k6 | +0,028 |
| Ø140h11 | -0,025 |
| Ø150k6 | +0,028 |
| Ø150H7 | +0,014 |
| Ø170H7 | +0,014 |
| Ø170k6 | +0,028 |
| | +0,003 |



A-A
(1:10)

Szczegóć "a"
(2:1)



- Uwaga:
- Ostre krawędzie ścieplić.
 - Na każdym zwoju ślimaka rozmieścić równomiernie 8 szt. zabieraka poz. 3.
 - Materiały wydano dla jednego ślimaka.

| Nr | Opis | Wymiar | Waga (kg) | Norma | Materiał |
|--------------------------------|-----------------------------|----------|-----------|---------------|------------------|
| 9 | Biercha Ø378xØ150x25 | 1 | 18,5 | S13S | PN-EN 10025:2002 |
| 8 | Biercha Ø378xØ160x25 | 1 | 18 | S13S | PN-EN 10025:2002 |
| 7 | Biercha Ø378xØ170x25 | 1 | 17,6 | S13S | PN-EN 10025:2002 |
| 6 | Biercha Ø378xØ180x25 | 1 | 17 | S13S | PN-EN 10025:2002 |
| 5 | Ciepł P - pęć Ø170x25 | 1 | 100 | S13S | PN-EN 10060:2006 |
| 4 | Ciepł L - pęć Ø180x25 | 1 | 203 | S13S | PN-EN 10060:2006 |
| 3 | Zabierak | 248 | 18G2A | 3/2% | PN-EN 10025:2002 |
| 2 | Biercha 12 na zwoje ślimaka | 444 | 18G2A | 444 | PN-EN 10025:2002 |
| 1 | Rura Ø406,4x16 | 1 | 18G2AA | 1396 | PN-90/H-74219 |
| Poz | Nazwa | Mat | Masa (kg) | Nr rys./Norma | Nr arch |
| | Zmiana | Nr karty | Podpis | | |
| Material | | | | | |
| ZESPÓŁ CZĘŚĆ | | | | | |
| Bromasa - Podajniki ślimakowe. | | | | | |
| Nr rysunku | | | | | |
| Ślimak Ø800/Ø530 prawy i lewy. | | | | | |
| 83.018.01.004.000.0 | | | | | |
| Podajnika | | | | | |
| ELPOSERWIS | | | | | |
| POLANIEC | | | | | |
| 1:20 | | | | | |
| Zespół rys. nr | | | | | |
| Nr arch | | | | | |
| 1 - 01479 | | | | | |