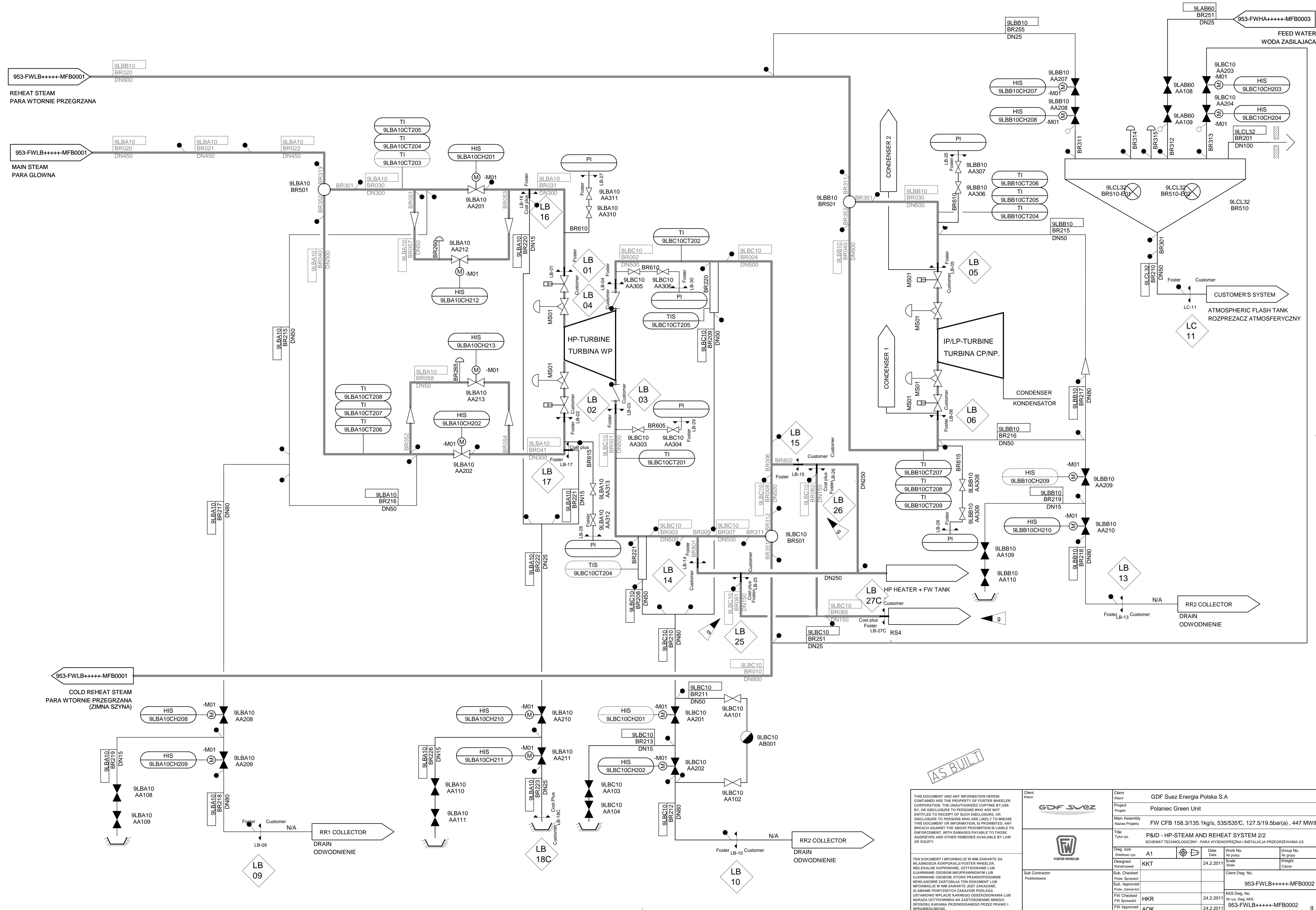


Rev.	Date	Appr.	Description	
f	5.4.2012	ARV	AOK	ADDED AIR VENT AND PRESSURE MEASUREMENT NOZZLES
g	27.9.2012	ARV	AOK	AS BUILT. ADDED COLD RH STEAM TO RS4.
*				



AS BUILT

<p>THIS DOCUMENT AND ANY INFORMATION HEREIN CONTAINED ARE THE PROPERTY OF FOSTER WHEELER CORPORATION. THE UNAUTHORIZED COPYING BY USE, BY OR DISCLOSURE TO PERSONS WHO ARE NOT ENTITLED TO RECEIPT OF SUCH DISCLOSURE, OR DISCLOSURE TO PERSONS WHO ARE LIKELY TO USE THIS DOCUMENT OR INFORMATION, IS PROHIBITED. ANY BREACH AGAINST THE ABOVE PROHIBITION IS LIABLE TO ENFORCEMENT, WITH DAMAGES PAYABLE TO THOSE AGRIEVED AND OTHER REMEDIES AVAILABLE BY LAW OR EQUITY.</p> <p>TEN DOKUMENT I INFORMACJE W NIM ZAWIERTE SA WLASNOSCIA KORPORACJI FOSTER WHEELER. NIELEGALNE KOPLOWANIE, UZYTEKOWANIE LUB UJAWNIANIE OSOBOM NIEUPRAWNIONYM LUB UJAWNIANIE OSOBOM, KTORE PRAWDOPODOBNIENIE NIEWLASNICWIE ZASTOSUJA TEN DOKUMENT LUB INFORMACJE W NIM ZAWIERTE, JEST ZAKAZANE. ZLAMANIE POWYZSZYCH ZAKAZOW PODLEGA USTAWOWO WPLACIE KARNEGO OSSODPOWONIANA LUB NARAZA UZYTEKOWNIKA NA ZASTOSOWANIE INNEGO SPOSOBU KARANIA PRZEWDZIADANEGO PRZEZ PRAWO I SPRAWIEDLIWOSC.</p>	Client Name	GDF Suez Energia Polska S.A			
	Client	Polaniec Green Unit			
Project Name	P/W CFB 158.3/135.1kg/s, 535/535°C, 127.5/19.5bar(a), 447 MWth				
Main Assembly Name	FW ID - HP-STEAM AND REHEAT SYSTEM 2/2				
Title	SCHEMAT TECHNOLOGICZNY - PARA WYSOKOPRĘŻNA I INSTALACJA PRZEGRZEWANIA 2/2				
Dwg. size	A1	Date	24.2.2011	Work No.	953-FWLb++++MFB0002
Designed	KKT	Scale		Group No.	
Sub. Checked		Sub. Approved		Client Dwg. No.	
Sub. Checked		Sub. Approved			
FW Checked	HKR	Date	24.2.2011	KKS Dwg. No.	
FW Approved	AOK	Date	24.2.2011	Nr rys. Dwg. KKS	953-FWLb++++MFB0002
FW Zaprojektował					g